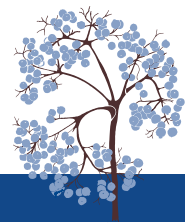


2016 THEODORE PAYNE FOUNDATION NATIVE PLANT GARDEN TOUR PLANT LIST  
 GARDEN 10 IN MAR VISTA

PROVIDED BY HOMEOWNER

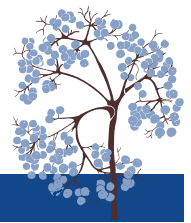


Botanical Name	Common Name
Arctostaphylos 'Howard McMinn'	Howard McMinn Manzanita
Arctostaphylos edmundsii 'Carmel Sur'	Carmel Sur Manzanita
Aristida purpurea	Purple Three Awn
Artemisia californica	California Sagebrush
Asclepias fascicularis	Narrow Leaf Milkweed
Aster--see Symphyotrichum	
Ceanothus 'Ray Hartman'	Ray Hartman California Lilac
Condea (Hyptis) emoryi	Desert Lavender
Corethrogyne (Lessingia) filaginifolia 'Silver Carpet'	Silver Carpet Common Sandaster
Diplacus longiflorus (Mimulus puniceus)	Sticky Monkeyflower
Diplacus (Mimulus) longiflorus hybrid	Monkeyflower Hybrid
Encelia californica	Coast Sunflower
Encelia farinosa	Brittlebush, Incienso
Epilobium (Zauschneria) canum	California Fuchsia
Erigeron glaucus	Seaside Daisy
Eriogonum arborescens	Santa Cruz Island Buckwheat
Eriogonum crocatum	Saffron or Conejo Buckwheat
Eriogonum fasciculatum	California Buckwheat
Eriogonum grande var. rubescens	Red Flowered or San Miguel Island Buckwheat
Eriogonum parvifolium	Seacliff Buckwheat
Eriogonum umbellatum var. polyanthum 'Shasta Sulfur'	Shasta Sulfur Buckwheat
Eschscholzia californica	California Poppy
Frangula (Rhamnus) californica 'Leatherleaf'	Leatherleaf Coffeeberry
Frangula (Rhamnus) californica 'Mound San Bruno'	Mound San Bruno Coffeeberry
Galvezia--see Gambelia	
Gambelia (Galvezia) juncea 'Punta Banda'	Punta Banda Baja Snapdragon
Gambelia (Galvezia) speciosa 'Firecracker'	Firecracker Showy Island Snapdragon
Heteromeles arbutifolia	Toyon
Heuchera 'Rosada'	Rosada Coral Bells
Heuchera 'Santa Ana Cardinal'	Santa Ana Cardinal Coral Bells
Heuchera 'Wendy'	Wendy Coral Bells
Heuchera maxima	Island Alumroot
Hyptis--see Condea	
Iris douglasiana hybrids	Douglas Iris hybrids
Lessingia--see Corethrogyne	
Mimulus--see Diplacus	



2016 THEODORE PAYNE FOUNDATION NATIVE PLANT GARDEN TOUR PLANT LIST  
 GARDEN 10 IN MAR VISTA

PROVIDED BY HOMEOWNER



Botanical Name	Common Name
<i>Monardella villosa</i> 'Russian River'	Russian River Coyote Mint
<i>Muhlenbergia rigens</i>	Deergrass
<i>Nassella</i> --see <i>Stipa</i>	
<i>Penstemon centranthifolius</i>	Scarlet Bugler
<i>Penstemon heterophyllus</i> 'Margarita BOP'	Margarita BOP Foothill Penstemon
<i>Platanus racemosa</i>	Western Sycamore
<i>Quercus berberidifolia</i>	Scrub Oak
<i>Rhamnus</i> --see <i>Frangula</i>	
<i>Ribes aureum</i> var. <i>gracillimum</i>	Golden Currant
<i>Ribes speciosum</i>	Fuchsia Flowering Gooseberry
<i>Salvia</i> 'Allen Chickering'	Allen Chickering Sage
<i>Salvia</i> 'Bee's Bliss'	Bee's Bliss Sage
<i>Salvia</i> 'Dara's Choice'	Dara's Choice Sage
<i>Salvia apiana</i>	White Sage
<i>Salvia spathacea</i>	Hummingbird Sage
<i>Solidago velutina</i> ssp. <i>californica</i>	California Goldenrod
<i>Sphaeralcea ambigua</i>	Apricot Mallow
<i>Stipa</i> ( <i>Nassella</i> ) <i>pulchra</i>	Purple Needle Grass
<i>Symphotrichum</i> ( <i>Aster</i> ) <i>chilense</i> 'Purple Haze'	Purple Haze California Aster
<i>Vitis</i> 'Roger's Red'	Roger's Red Wild Grape Hybrid
<i>Vitis californica</i>	California Wild Grape
<i>Zauschneria</i> --see <i>Epilobium</i>	

