

2016 THEODORE PAYNE FOUNDATION NATIVE PLANT GARDEN TOUR PLANT LIST
 GARDEN 18 IN GARDENA

PROVIDED BY HOMEOWNER

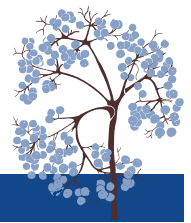


Botanical Name	Common Name
<i>Achillea millefolium</i>	Common Yarrow
<i>Allium haematochiton</i>	Red Skinned Onion
<i>Allium unifolium</i>	One Leaf Onion
<i>Anemopsis californica</i>	Yerba Mansa
<i>Aquilegia formosa</i>	Western Columbine
<i>Arctostaphylos</i> 'Howard McMinn'	Howard McMinn Manzanita
<i>Arctostaphylos glauca</i>	Big Berry Manzanita
<i>Arctostaphylos uva-ursi</i>	Bearberry Manzanita, Kinnickinnick
<i>Artemisia californica</i>	California Sagebrush
<i>Artemisia douglasiana</i>	Mugwort
<i>Artemisia dracunculus</i>	Wild Tarragon
<i>Asclepias eriocarpa</i>	Indian Milkweed, Kotolo Milkweed
<i>Asclepias fascicularis</i>	Narrow Leaf Milkweed
<i>Asclepias speciosa</i>	Showy Milkweed
<i>Aster</i> --see <i>Symphytotrichum</i>	
<i>Astragalus trichopodus</i> var. <i>lonchus</i>	Rattlepod
<i>Baccharis douglasii</i>	Marsh Baccharis
<i>Baccharis pilularis</i>	Coyote Brush
<i>Baccharis salicifolia</i>	Mulefat
<i>Berberis</i> (<i>Mahonia</i>) <i>nevinii</i>	Nevin's Barberry
<i>Boykinia rotundifolia</i>	Roundleaf Boykinia
<i>Brickellia californica</i>	California Brickellbush
<i>Calandrinia ciliata</i> var. <i>menziesii</i>	Redmaids
<i>Camassia quamash</i>	Common Camas
<i>Carex pansa</i>	Dune Sedge
<i>Carex tumulicola</i>	Foothill Sedge
<i>Ceanothus</i> 'Anchor Bay'	Anchor Bay Ceanothus
<i>Ceanothus</i> 'Ray Hartman'	Ray Hartman California Lilac
<i>Ceanothus leucodermis</i>	Chaparral Whitethorn
<i>Cercis occidentalis</i>	Western Redbud
<i>Cercocarpus betuloides</i> var. <i>betuloides</i>	Birch Leaf Mountain Mahogany
<i>Chlorogalum pomeridianum</i> var. <i>pomeridianum</i>	Soap Plant
<i>Chrysothamnus</i> --see <i>Ericameria</i>	
<i>Cirsium occidentale</i> var. <i>occidentale</i>	Cobwebby Thistle
<i>Clarkia amoena</i>	Farewell-to-Spring
<i>Clarkia purpurea</i> ssp. <i>quadrivulnera</i>	Purple Clarkia
<i>Clarkia unguiculata</i>	Elegant Clarkia



2016 THEODORE PAYNE FOUNDATION NATIVE PLANT GARDEN TOUR PLANT LIST
 GARDEN 18 IN GARDENA

PROVIDED BY HOMEOWNER



Botanical Name	Common Name
<i>Claytonia perfoliata</i>	Miner's Lettuce
<i>Clematis ligusticifolia</i> var. <i>californica</i>	Western Virgin's Bower
<i>Clinopodium</i> (<i>Satureja</i>) <i>douglasii</i>	Yerba Buena
<i>Cneoridium dumosum</i>	Bushrue
<i>Collinsia heterophylla</i>	Chinese Houses
<i>Constancea</i> (<i>Eriophyllum</i>) <i>nevinii</i>	Catalina Silverlace, Nevin's Woolly Sunflower
<i>Dichelostemma capitatum</i> ssp. <i>capitatum</i>	Blue Dicks, Wild Hyacinth
<i>Dichondra occidentalis</i>	Western Dichondra
<i>Diplacus</i> (<i>Mimulus</i>) 'Jelly Bean Red'	Jelly Bean Red Monkeyflower
<i>Diplacus</i> (<i>Mimulus</i>) 'Trish'	Trish Monkeyflower
<i>Diplacus longiflorus</i> (<i>Mimulus aurantiacus</i>)	Sticky Monkeyflower
<i>Drymocallis</i> (<i>Potentilla</i>) <i>glandulosa</i>	Sticky Cinquefoil
<i>Eleocharis macrostachya</i>	Pale Spikerush
<i>Elymus</i> (<i>Leymus</i>) <i>glaucus</i> ssp. <i>glaucus</i>	Blue Wild Rye
<i>Encelia californica</i>	Coast Sunflower
<i>Epilobium</i> (<i>Zauschneria</i>) <i>canum</i>	California Fuchsia
<i>Epilobium</i> (<i>Zauschneria</i>) <i>ciliatum</i> ssp. <i>ciliatum</i>	Fringed Willow Herb
<i>Ericameria</i> (<i>Chrysothamnus</i>) <i>nauseosa</i> ssp. <i>nauseosa</i>	Rubber Rabbitbush
<i>Eriogonum cinereum</i>	Ashy Leaf Buckwheat
<i>Eriogonum crocatum</i>	Saffron or Conejo Buckwheat
<i>Eriogonum fasciculatum</i> 'Dana Point'	Dana Point California Buckwheat
<i>Eriogonum giganteum</i> var. <i>giganteum</i>	St. Catherine's Lace
<i>Eriogonum grande</i> var. <i>rubescens</i>	Red Flowered or San Miguel Island Buckwheat
<i>Eriogonum parvifolium</i>	Seacliff Buckwheat
<i>Eriophyllum</i> --see <i>Constancea</i>	
<i>Erythranthe</i> (<i>Mimulus</i>) <i>cardinalis</i>	Scarlet Monkeyflower
<i>Erythranthe</i> (<i>Mimulus</i>) <i>guttatus</i>	Seep Monkeyflower
<i>Eschscholzia californica</i>	California Poppy
<i>Euphorbia misera</i>	Cliff Spurge
<i>Festuca idahoensis</i>	Idaho Fescue
<i>Fragaria chiloensis</i> ssp. <i>pacifica</i>	Beach Strawberry
<i>Frangula</i> (<i>Rhamnus</i>) <i>californica</i>	Coffeeberry
<i>Frangula</i> (<i>Rhamnus</i>) <i>californica</i> 'Eve Case'	Eve Case Coffeeberry
<i>Frankenia salina</i>	Alkali Heath
<i>Galium angustifolium</i> ssp. <i>angustifolium</i>	Narrowleaf Bedstraw
<i>Galvezia</i> --see <i>Gambelia</i>	
<i>Gambelia</i> (<i>Galvezia</i>) <i>speciosa</i>	Showy Island Snapdragon



2016 THEODORE PAYNE FOUNDATION NATIVE PLANT GARDEN TOUR PLANT LIST
GARDEN 18 IN GARDENA

PROVIDED BY HOMEOWNER



Botanical Name	Common Name
<i>Garrya elliptica</i> 'Evie'	Evie Silktassel
<i>Gilia capitata</i> ssp. <i>abrotanifolia</i>	Globe Gilia
<i>Gilia tricolor</i>	Bird's Eye Gilia
<i>Gnaphalium</i> --see <i>Pseudognaphalium</i>	
<i>Grindelia camporum</i>	Common Gumplant
<i>Hazardia squarrosa</i>	Sawtoothed Goldenbush
<i>Helenium puberulum</i>	Rosilla
<i>Heteromeles arbutifolia</i>	Toyon
<i>Heterotheca grandiflora</i>	Telegraph Weed
<i>Heuchera</i> 'Canyon Chimes'	Canyon Chimes Coral Bells
<i>Heuchera</i> 'Wendy'	Wendy Coral Bells
<i>Heuchera maxima</i>	Island Alumroot
<i>Hibiscus lasiocarpus</i> var. <i>occidentalis</i>	Woolly Rose Mallow
<i>Horkelia cuneata</i> ssp. <i>cuneata</i>	Wedge Leaf Horkelia
<i>Iris douglasiana</i>	Douglas Iris
<i>Jaumea carnosa</i>	Marsh Jaumea
<i>Juncus oxymeris</i>	Pointed Rush
<i>Juncus patens</i>	Common Rush
<i>Juncus textilis</i>	Basket Rush
<i>Juncus torreyi</i>	Torrey's Rush
<i>Juncus xiphioides</i>	Iris Leaved Rush
<i>Keckiella cordifolia</i>	Heart Leaved Keckiella
<i>Koeleria macrantha</i>	Prairie Junegrass
<i>Lepechinia fragrans</i>	Fragrant Pitcher Sage
<i>Leptosiphon</i> (<i>Linanthus</i>) <i>grandiflorus</i>	Large Flowered Leptosiphon
<i>Leymus</i> --see <i>Elymus</i>	
<i>Linanthus</i> --see <i>Leptosiphon</i>	
<i>Linum lewisii</i> var. <i>lewisii</i>	Blue Flax
<i>Lomatium utriculatum</i>	Common Lomatium, Bladder Parsnip
<i>Lonicera hispidula</i>	Pink Honeysuckle
<i>Lonicera subspicata</i> var. <i>subspicata</i>	Southern Honeysuckle
<i>Lupinus bicolor</i> ssp. <i>microphyllus</i>	Miniature Lupine
<i>Lupinus excubitus</i> var. <i>hallii</i>	Grape Soda Lupine
<i>Lupinus longifolius</i>	Long Leaf Bush Lupine
<i>Lupinus succulentus</i>	Arroyo Lupine
<i>Mahonia</i> --see <i>Berberis</i>	
<i>Malacothrix saxatilis</i> var. <i>tenuifolia</i>	Cliff Aster



2016 THEODORE PAYNE FOUNDATION NATIVE PLANT GARDEN TOUR PLANT LIST
 GARDEN 18 IN GARDENA

PROVIDED BY HOMEOWNER



Botanical Name	Common Name
<i>Mentha arvensis</i>	Field Mint
<i>Microseris</i> --see <i>Uropappus</i>	
<i>Mimulus</i> --see <i>Diplacus</i> , <i>Erythranthe</i>	
<i>Mirabilis laevis</i> var. <i>crassifolia</i> (<i>M. californica</i>)	California Four O'Clock, Wishbone Bush
<i>Mirabilis multiflora</i>	Desert Four O'Clock
<i>Monardella odoratissima</i>	Mountain Pennyroyal
<i>Monardella villosa</i> ssp. <i>villosa</i>	Coyote Mint
<i>Monardella viminea</i>	Willow Mint
<i>Muhlenbergia rigens</i>	Deergrass
<i>Nassella</i> --see <i>Stipa</i>	
<i>Nemophila menziesii</i>	Baby Blue Eyes
<i>Oenanthe sarmentosa</i>	Water Parsley
<i>Penstemon centranthifolius</i>	Scarlet Bugler
<i>Penstemon heterophyllus</i> ssp. <i>australis</i>	Foothill Penstemon
<i>Perityle incana</i>	Guadalupe Island Rock Daisy
<i>Phacelia tanacetifolia</i>	Lacy Phacelia
<i>Phyla nodiflora</i>	Common Lippia
<i>Plantago erecta</i>	California Plantain
<i>Pluchea odorata</i> var. <i>odorata</i>	Salt Marsh Fleabane
<i>Polypodium californicum</i> 'Sarah Lyman'	Sarah Lyman Polypody Fern
<i>Potentilla</i> --see <i>Drymocallis</i>	
<i>Prunus andersonii</i>	Desert Peach
<i>Prunus ilicifolia</i> (hybrid variety)	Holly Leaf Cherry
<i>Prunus virginiana</i> var. <i>demissa</i>	Chokecherry
<i>Pseudognaphalium</i> (<i>Gnaphalium</i>) <i>canescens</i> ssp. <i>microcephalum</i>	Wright's Cudweed
<i>Quercus berberidifolia</i>	Scrub Oak
<i>Rhamnus ilicifolia</i>	Holly Leaf Redberry
<i>Rhamnus</i> --see also <i>Frangula</i>	
<i>Rhus aromatica</i> (<i>R. trilobata</i>)	Basket Bush, Skunkbrush
<i>Rhus integrifolia</i>	Lemonade Berry
<i>Ribes aureum</i> var. <i>gracillimum</i>	Golden Currant
<i>Ribes sanguineum</i> var. <i>glutinosum</i> 'Claremont'	Claremont Pink Flowering Currant
<i>Ribes viburnifolium</i>	Evergreen Currant, Catalina Perfume
<i>Rosa californica</i>	California Wild Rose
<i>Rumex hymenosepalus</i>	Canaigre Dock
<i>Rumex salicifolius</i>	Willow Leaf Dock



2016 THEODORE PAYNE FOUNDATION NATIVE PLANT GARDEN TOUR PLANT LIST
 GARDEN 18 IN GARDENA

PROVIDED BY HOMEOWNER



Botanical Name	Common Name
<i>Salvia apiana</i>	White Sage
<i>Salvia clevelandii</i>	Cleveland Sage
<i>Salvia leucophylla</i>	Purple Sage
<i>Salvia mellifera</i>	Black Sage
<i>Salvia munzii</i>	Munz's Sage
<i>Salvia spathacea</i>	Hummingbird Sage
<i>Sambucus nigra</i> ssp. <i>caerulea</i>	Elderberry
<i>Satureja</i> --see <i>Clinopodium</i>	
<i>Senecio flaccidus</i> var. <i>douglasii</i>	Shrubby Butterweed
<i>Sisyrinchium bellum</i>	Blue Eyed Grass
<i>Solidago velutina</i> ssp. <i>californica</i>	California Goldenrod
<i>Stachys bullata</i>	California Hedge Nettle
<i>Stipa</i> (<i>Nassella</i>) <i>lepida</i>	Foothill Needle Grass
<i>Symphoricarpos mollis</i>	Creeping Snowberry
<i>Symphyotrichum</i> (<i>Aster</i>) <i>chilense</i>	California Aster
<i>Thalictrum fendleri</i> var. <i>polycarpum</i>	Torrey's Meadow Rue
<i>Trichostema lanatum</i>	Wooly Bluecurls
<i>Trifolium ciliolatum</i>	Tree Clover
<i>Trifolium fucatum</i>	Bull Clover
<i>Trifolium willdenovii</i>	Tomcat Clover
<i>Uropappus</i> (<i>Microseris</i>) <i>lindleyi</i>	Silver Puffs
<i>Verbena lasiostachys</i>	Common Verbena
<i>Verbena lilacina</i>	Lilac Verbena
<i>Zauschneria</i> --see <i>Epilobium</i>	

