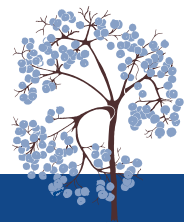


2016 THEODORE PAYNE FOUNDATION NATIVE PLANT GARDEN TOUR PLANT LIST  
 GARDEN 28 IN GLENDALE

PROVIDED BY HOMEOWNER



Botanical Name	Common Name
<i>Abutilon palmeri</i>	Palmer's Indian Mallow
<i>Achillea millefolium</i>	Common Yarrow
<i>Arctostaphylos</i> 'Dr. Hurd'	Dr. Hurd Manzanita
<i>Artemisia californica</i>	California Sagebrush
<i>Artiplex lentiformis</i>	Quail Bush, Big Salt Bush
<i>Baccharis pilularis</i>	Coyote Brush
<i>Ceanothus</i> 'Ray Hartman'	Ray Hartman California Lilac
<i>Ceanothus</i> (unidentified)	California Lilac (unidentified)
<i>Ceanothus arboreus</i>	Catalina Ceanothus
<i>Ceanothus thyrsiflorus</i> var. <i>griseus</i> 'Yankee Point'	Yankee Point Carmel Ceanothus
<i>Diplacus</i> ( <i>Mimulus</i> ) <i>aurantiacus</i> var. <i>puniceus</i>	Sticky Monkeyflower
<i>Elymus</i> ( <i>Leymus</i> ) <i>condensatus</i> 'Canyon Prince'	Canyon Prince Giant Wild Rye
<i>Encelia farinosa</i>	Brittlebush, Incienso
<i>Eriogonum arborescens</i>	Santa Cruz Island Buckwheat
<i>Eriogonum fasciculatum</i>	California Buckwheat
<i>Eriogonum parvifolium</i>	Seacliff Buckwheat
<i>Leymus</i> --see <i>Elymus</i>	
<i>Mimulus</i> --see <i>Diplacus</i>	
<i>Salvia apiana</i>	White Sage
<i>Salvia clevelandii</i>	Cleveland Sage
<b>Annual Wildflowers</b>	
<i>Eschscholzia californica</i>	California Poppy
<i>Lupinus</i> (var. unknown)	Lupine

