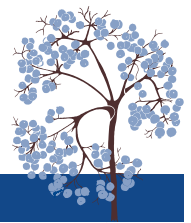


2016 THEODORE PAYNE FOUNDATION NATIVE PLANT GARDEN TOUR PLANT LIST
 GARDEN 30 IN LA CANADA FLINTRIDGE

PROVIDED BY HOMEOWNER



Botanical Name	Common Name
Front Yard	
<i>Aristida purpurea</i>	Purple Three Awn
Aster--see <i>Symphyotrichum</i>	
<i>Bahiopsis (Viguiera) laciniata</i>	San Diego Sunflower
<i>Baileya multiradiata</i> var. <i>multiradiata</i>	Desert Marigold
<i>Ceanothus 'Ray Hartman'</i>	Ray Hartman California Lilac
<i>Cercidium</i> --see <i>Parkinsonia</i>	
<i>Clarkia unguiculata</i>	Elegant Clarkia
<i>Dudleya brittoni</i>	Britton's Dudleya
<i>Dudleya pulverulenta</i>	Chalk Dudleya
<i>Eriogonum arborescens</i>	Santa Cruz Island Buckwheat
<i>Eriogonum crocatum</i>	Saffron or Conejo Buckwheat
<i>Eschscholzia californica</i>	California Poppy
<i>Ferocactus cylindraceus</i>	California Barrel Cactus
<i>Hesperoyucca (Yucca) whipplei</i>	Chaparral Yucca, Our Lord's Candle
<i>Layia platyglossa</i>	Tidy Tips
<i>Lupinus microcarpus</i> var. <i>densiflorus</i>	Chick Lupine
<i>Monardella villosa</i>	Coyote Mint
<i>Nemophila maculata</i>	Five Spot
<i>Opuntia basilaris</i>	Beavertail Cactus
<i>Parkinsonia (Cercidium) florida</i>	Palo Verde
<i>Penstemon heterophyllus 'Margarita BOP'</i>	Margarita Bop Foothill Penstemon
<i>Phacelia campanularia</i>	Desert Bluebells
<i>Salvia 'Celestial Blue'</i>	Celestial Blue Sage
<i>Sidalcea malviflora</i>	Checkerbloom
<i>Sisyrinchium bellum</i>	Blue Eyed Grass
<i>Sphaeralcea ambigua</i>	Apricot Mallow (pink/white variety)
<i>Symphyotrichum (Aster) chilense</i>	California Aster
<i>Verbena lilacina</i>	Lilac Verbena
<i>Viguiera</i> --see <i>Bahiopsis</i>	
<i>Yucca</i> --see <i>Hesperoyucca</i>	
Back Yard	
<i>Arctostaphylos 'John Dourley'</i>	John Dourley Manzanita
<i>Aristida purpurea</i>	Purple Three Awn
<i>Calliandra californica</i>	Red or Baja Fairyduster
<i>Calliandra eriophylla</i>	Pink Fairyduster
<i>Calystegia macrostegia 'Anacapa Pink'</i>	Anacapa Pink Island Morning Glory



2016 THEODORE PAYNE FOUNDATION NATIVE PLANT GARDEN TOUR PLANT LIST
 GARDEN 30 IN LA CANADA FLINTRIDGE

PROVIDED BY HOMEOWNER



Botanical Name	Common Name
<i>Cercis occidentalis</i>	Western Redbud
<i>Diplacus (Mimulus) aurantiacus</i>	Sticky Monkeyflower
<i>Heteromeles arbutifolia</i>	Toyon
<i>Heuchera caespitosa</i> 'Bella Blanca'	Bella Blanca Urnflower Alumroot
<i>Iris douglasiana</i>	Douglas Iris
<i>Iris innominata</i>	Del Norte County Iris
<i>Juncus patens</i> 'Elk Blue'	Elk Blue Common Rush
<i>Lithocarpus</i> --see <i>Notholithocarpus</i>	
<i>Malacothamnus clementinus</i>	San Clemente Island Bush Mallow
<i>Mimulus</i> --see <i>Diplacus</i>	
<i>Notholithocarpus (Lithocarpus) densiflorus</i>	Tanbark Oak
<i>Penstemon heterophyllus</i> 'Margarita BOP'	Margarita BOP Foothill Penstemon
<i>Ribes sanguineum</i> var. <i>glutinosum</i> 'Claremont'	Claremont Pink Flowering Currant
<i>Salvia</i> 'Celestial Blue'	Celestial Blue Sage
<i>Salvia clevelandii</i> 'Winnifred Gilman'	Winnifred Gilman Cleveland Sage
<i>Sidalcea malviflora</i>	Checkerbloom
<i>Sisyrinchium bellum</i>	Blue Eyed Grass
<i>Sphaeralcea ambigua</i>	Apricot Mallow

