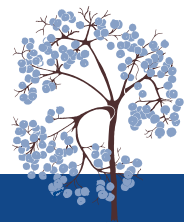


2016 THEODORE PAYNE FOUNDATION NATIVE PLANT GARDEN TOUR PLANT LIST
GARDEN 41 IN ATWATER

PROVIDED BY HOMEOWNER



Botanical Name	Common Name
<i>Abutilon palmeri</i>	Palmer's Indian Mallow
<i>Achillea millefolium</i>	Common Yarrow
<i>Adiantum capillus-veneris</i>	Southern Maidenhair Fern
<i>Adiantum jordanii</i>	California Maidenhair Fern
<i>Allium haematochiton</i>	Red Skinned Onion
<i>Arctostaphylos</i> 'Baby Bear'	Baby Bear Manzanita
<i>Arctostaphylos</i> 'Emerald Carpet'	Emerald Carpet Manzanita
<i>Arctostaphylos</i> 'John Dourley'	John Dourley Manzanita
<i>Arctostaphylos bakeri</i> 'Louis Edmunds'	Louis Edmunds Manzanita
<i>Arctostaphylos glauca</i>	Big Berry Manzanita
<i>Arctostaphylos manzanita</i> 'Dr Hurd'	Dr. Hurd Manzanita
<i>Arctostaphylos silvicola</i> 'Ghostly'	Ghostly Manzanita
<i>Artemisia californica</i>	California Sagebrush
<i>Berberis</i> (Mahonia) <i>aquifolium</i>	Oregon Grape
<i>Berberis</i> (Mahonia) <i>aquifolium</i> 'Compacta'	Compacta Oregon Grape
<i>Berberis</i> (Mahonia) <i>aquifolium</i> var. <i>repens</i>	Creeping Oregon Grape, Dwarf Mahonia
<i>Berberis</i> (Mahonia) <i>nevinii</i>	Nevin's Barberry
<i>Carpenteria californica</i>	Bush Anemone
<i>Ceanothus</i> 'Ray Hartman'	Ray Hartman California Lilac
<i>Cercidium</i> --see <i>Parkinsonia</i>	
<i>Cercis occidentalis</i>	Western Redbud
<i>Cercocarpus betuloides</i> var. <i>betuloides</i>	Birch Leaf Mountain Mahogany
<i>Clarkia amoena</i>	Farewell-To-Spring
<i>Clarkia unguiculata</i>	Elegant Clarkia
<i>Claytonia perfoliata</i>	Miner's Lettuce
<i>Cornus sericea</i>	Redtwig Dogwood
<i>Dendromecon harfordii</i>	Channel Island Bush Poppy
<i>Diplacus</i> (<i>Mimulus</i>) <i>aurantiacus</i>	Sticky Monkeyflower
<i>Diplacus</i> (<i>Mimulus</i>) cvs.	Monkeyflower cultivars
<i>Dryopteris arguta</i>	Wood Fern
<i>Dudleya cymosa</i>	Canyon Live Forever
<i>Dudleya lanceolata</i>	Lance Leaf Dudleya
<i>Dudleya pulverulenta</i>	Chalk Dudleya
<i>Epilobium</i> (<i>Zauschneria</i>) <i>canum</i> ssp. <i>canum</i>	Hoary Fuchsia
<i>Equisetum hyemale</i>	Horsetail
<i>Eriogonum crocatum</i>	Saffron or Conejo Buckwheat
<i>Eriogonum fasciculatum</i> var. <i>foliolosum</i>	California Buckwheat



2016 THEODORE PAYNE FOUNDATION NATIVE PLANT GARDEN TOUR PLANT LIST
GARDEN 41 IN ATWATER

PROVIDED BY HOMEOWNER

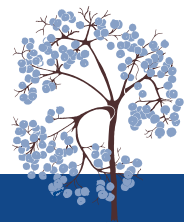


Botanical Name	Common Name
<i>Eriogonum grande</i> var. <i>rubescens</i>	Red Flowered or San Miguel Island Buckwheat
<i>Eschscholzia californica</i>	California Poppy
<i>Festuca californica</i>	California Fescue
<i>Fragaria vesca</i>	Wood Strawberry
<i>Frangula</i> (<i>Rhamnus</i>) <i>californica</i> 'Eve Case'	Eve Case Coffeeberry
<i>Hesperoyucca</i> (<i>Yucca</i>) <i>whipplei</i>	Chaparral Yucca, Our Lord's Candle
<i>Heteromeles arbutifolia</i>	Toyon
<i>Heuchera</i> 'Wendy'	Wendy Coral Bells
<i>Juncus effusus</i>	Bog Rush
<i>Lepechinia fragrans</i>	Fragrant Pitcher Sage
<i>Lonicera hispidula</i>	Pink Honeysuckle
<i>Lupinus arboreus</i>	Tree Lupine
<i>Mahonia</i> --see <i>Berberis</i>	
<i>Marah macrocarpa</i>	Wild Cucumber, Chilicothe
<i>Mimulus</i> --see <i>Diplacus</i>	
<i>Monardella odoratissima</i> ssp. <i>odoratissima</i>	Desert Mint, Mountain Pennyroyal
<i>Monardella villosa</i> (var. <i>subglabra</i>)	Coyote Mint
<i>Morella</i> (<i>Myrica</i>) <i>californica</i>	Pacific Wax Myrtle
<i>Myrica</i> --see <i>Morella</i>	
<i>Parkinsonia</i> (<i>Cercidium</i>) <i>microphylla</i>	Little Leaf Palo Verde
<i>Pellaea andromedifolia</i>	Coffee Fern
<i>Pellaea mucronata</i>	Bird's Foot Fern
<i>Phacelia campanularia</i>	Desert Bluebells
<i>Phacelia tanacetifolia</i>	Tansy Leaf or Lacy Phacelia
<i>Philadelphus lewisii</i>	Mock Orange
<i>Pinus torreyana</i>	Torrey Pine
<i>Polypodium californicum</i>	California Polypody
<i>Polystichum munitum</i>	Western Sword Fern
<i>Quercus agrifolia</i>	Coast Live Oak
<i>Quercus berberidifolia</i>	Scrub Oak
<i>Quercus douglasii</i>	Blue Oak
<i>Quercus durata</i>	Leather Oak
<i>Quercus lobata</i>	Valley Oak
<i>Quercus wislizenii</i> var. <i>frutescens</i>	Dwarf Interior Live Oak
<i>Rhamnus ilicifolia</i>	Holly Leaf Redberry
<i>Rhamnus</i> --see also <i>Frangula</i>	
<i>Rhus integrifolia</i>	Lemonade Berry



2016 THEODORE PAYNE FOUNDATION NATIVE PLANT GARDEN TOUR PLANT LIST
 GARDEN 41 IN ATWATER

PROVIDED BY HOMEOWNER



Botanical Name	Common Name
<i>Rhus lentii</i>	Pink Flowered Sumac
<i>Ribes aureum</i> var. <i>gracillimum</i>	Golden Currant
<i>Ribes indecorum</i>	White Flowered Currant
<i>Ribes malvaceum</i>	Chaparral Currant
<i>Ribes viburnifolium</i>	Evergreen Currant, Catalina Perfume
<i>Romneya coulteri</i>	Matilija Poppy
<i>Rosa californica</i>	California Wild Rose
<i>Rosa pinetorum</i>	Pine Rose
<i>Salvia apiana</i>	White Sage
<i>Salvia clevelandii</i>	Cleveland Sage
<i>Salvia mellifera</i> var. <i>repens</i>	Creeping Black Sage
<i>Salvia sonomensis</i>	Sonoma Sage
<i>Salvia spathacea</i>	Hummingbird Sage
<i>Salvia spathacea</i> 'Powerline Pink'	Powerline Pink Hummingbird Sage
<i>Sisyrinchium bellum</i>	Blue Eyed Grass
<i>Solanum wallacei</i>	Wallace's Nightshade
<i>Sphaeralcea ambigua</i>	Apricot Mallow
<i>Umbellularia californica</i>	California Bay Laurel
<i>Venegasia carpesioides</i>	Canyon Sunflower
<i>Yucca</i> --see <i>Hesperoyucca</i>	
<i>Zauschneria</i> --see <i>Epilobium</i>	

